



**C10 2nd
Air Quality Monitor
User Manual**

Get More Information

Scan the QR code for multi-language manuals and more.



Scan for multi-language manuals and more product support.

Scannen Sie nach mehrsprachigen Handbüchern und mehr Produktsupport.

Numérisez pour obtenir des manuels multilingues et plus d'assistance sur les produits.

Scansione per manuali multilingue e maggiore supporto al prodotto.

Busque manuales en varios idiomas y más asistencia sobre productos.

Factors Affecting Air Quality



Carbon dioxide(CO_2) is a colorless and odorless gas usually derived from the breath of humans and animals. High CO_2 concentration means that fresh air or ventilation is required; otherwise, it may cause problems such as drowsiness, dizziness, loss of attention, and cognitive impairment.

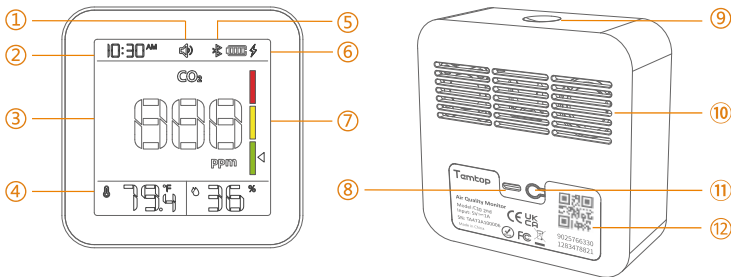


Temperature & Humidity may often be ignored however they do have a significant impact on individual's well-being, comfort, health and safety as well as your property. High humidity may lead to an increase in household air pollutants especially the biological contaminants such as molds, bacteria, viruses and dust mites; cold, low humidity may cause nosebleeds, skin and respiratory irritations, dyspnea, static electricity and etc.

Important

- ★ Do not use the detector in a humid environment for a long time to ensure the measurement accuracy.
- ★ Do not use the detector for a long time in a strong irritating odor environment to ensure measurement accuracy.
- ★ Do not disassemble the device. In the event of a defect, please contact your dealer. The dealer will contact the Service Centre and can send the device in to be repaired, if necessary.
- ★ Children should only use the device under adult supervision. Keep packaging material, like plastic bags and plastic film, out of the reach of children, as they pose a choking hazard.
- ★ This product is only used to monitor the health of the indoor environment and cannot be used as a professional measurement tool.

Overview



- | | | |
|---------------------------------------|------------------------------|-------------------------|
| ① Buzzer Display Status | ② Time | ③ CO ₂ Level |
| ④ Temperature & Humidity Display Area | ⑤ Bluetooth Status | |
| ⑥ Battery Level & Charging Status | ⑦ CO ₂ colour bar | ⑧ USB Port |
| ⑨ Home Button | ⑩ Air Inlet/Outlet | ⑪ Back Button |
| ⑫ GUID QR Code * | | |

* GUID QR Code:

1) A unique GUID number for the product.

2) Scan the GUID QR code with the Tamtop app for Bluetooth connectivity.

Specifications

Model: C10 2nd

Dimensions: 82x82x31mm (3.2x3.2x1.2 in)

Battery capacity: 2200mAh

Input: DC 5V 1A

Operation environment: 0-50°C (32-122°F)

0-90%RH

Temperature*

Measuring range: 0-60°C (32-140°F)

Resolution: 0.1°C (0.1°F)

Accuracy: $\pm 0.5^{\circ}\text{C}$ ($\pm 0.9^{\circ}\text{F}$)

CO₂

Measuring range: 400-5000ppm

Resolution: 1ppm

Accuracy: $\pm(40\text{ppm} + 5\%)$
(400-2500ppm)

Humidity

Measuring range: 0-99%RH

Resolution: 1%RH


Accuracy: $\pm 3\% \text{RH}$

- * 1) When charging, the temperature will be on the high side and it will take about half an hour to return to normal after charging.
2) When detecting sudden changes in ambient temperature, a greenhouse acclimatisation time of about half an hour is required.

Note: The above data are from Temtop Laboratory.

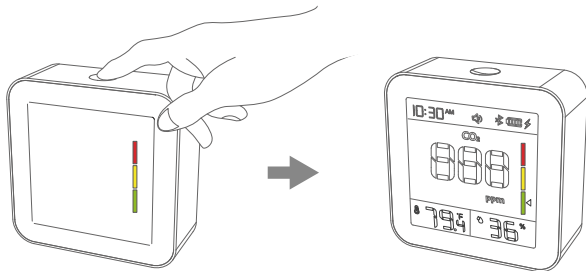
Operations

Warning!

- For indoor use: Keep the room/area airtight for 10 minutes to obtain more accurate results.
- If the battery level shows , please charge the detector in time to avoid being affected during use (it can also recharge when switched off).
- This product uses ink screen, product operation process, the full screen black and white anti-display flicker is a normal phenomenon.

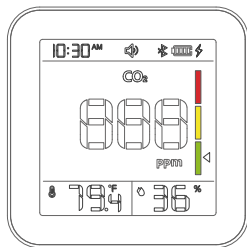
1. On/Off

Press the Home button 2s to turn ON/OFF the C10 2nd monitor.



2. Display

The product will display CO₂, temperature, and humidity after switched on.



Status	Reference
Poor	1501~5000 ppm
Fair	1001~1500 ppm
Good	400~1000 ppm

Buzzer switch Icon 

Displayed: Buzzer sound on the device is turned on;

Not displayed: The buzzer sound is turned off.

1) The buzzer chirps once when the buzzer function is turned on/off (APP operation is synchronized).

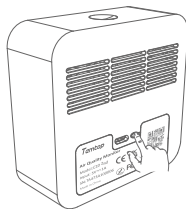
2) When the buzzer is switched on, the air quality level deterioration sounds twice.

Bluetooth Icon 

Displayed: Bluetooth icon is displayed when connected.

Not displayed: Bluetooth icon is not displayed when disconnected.

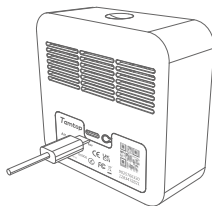
3. Back Button



operate	status
Double click	Turn on/off the buzzer
Press and hold 3s	Switch temperature unit (°F/°C)

4.Charging

When the battery level is low, please charge it by connecting it to the USB cable and power supply.



5. Bluetooth Connection

5.1 Temtop App

Please search Temtop on App Store or Google Play,
or simply scan the QR code below to download the app:



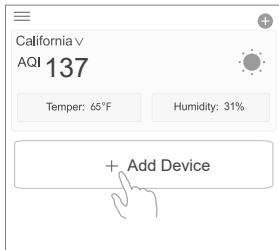
iOS App



Android App

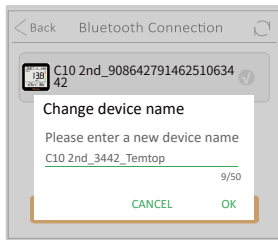
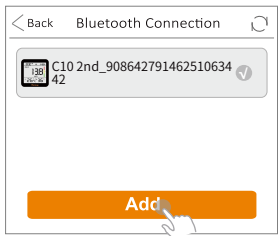
5.2 Add Device

- a. Start adding devices by clicking the '+' sign on the home page of the Temtop application.



- b. Enable your phone's Bluetooth with the app, which will automatically detect Temtop devices in range of Bluetooth. Please select the Temtop device you wish to add and click the Add button.

If you have problems connecting your device, bring the device close to your mobile phone and make sure they are close enough to make a successful Bluetooth connection.



5.3 APP Main Functions

- Access real-time measurement data.
- View historical data curves.
- Data storage and export.
- Calibrate the device.
- Change device parameter preferences and much more...

*Note: 1)When using the app, make sure your device is within the Bluetooth range.
Please avoid moving too far away from the device.*

2)Due to the upgrading and updating of Temtop APP, the actual operation may be slightly different from the above description, please follow the current guidelines within Temtop APP.

FAQ

Q: Why can't I receive the verification code when I sign up for an APP account?

- A: ① Please check the advertisement mails and spam mails, your mailbox may automatically classify the CAPTCHA mails into advertisement mails and spam mails.
- ② Google Mail, Outlook, and other major mailboxes are recommended.

Q: Why can't the APP connect to the device?

- A: ① Make sure your phone and device are in the same room and as close to the device as possible.
- ② Try restarting the device or connecting with another phone.
- ③ If the issue is still not resolved, please contact our customer service for further support.

Q: Why is CO₂ data high?

A: The user's environment may be poorly ventilated, resulting in high CO₂ concentration; it is recommended that the user place the product in an outdoor ventilated place for 10 minutes. If the data is still high, the customer is advised to perform a CO₂ calibration via the APP.

Q: Why is the temperature high when charging?

A: The temperature and humidity sensor is located inside the product. When charging, a large amount of heat will be generated, causing the actual temperature of the product to rise.

What's Included

- Air Quality Detector x1
- C10 2nd Manual x1
- USB Cable x1

Warranty

Temtop warrants the included detector for 1 year from the date of original purchase. The item can be exchanged or returned within 30 days if the defect is not caused by artificial damage.

Item	Warranty Period
Detector	1 year
Accessories	N/A

Before return or delivery for repair, please check if the following ✓ items are ready:

	Detector & Accessories	Complete Package	Proof of Purchase*	Gift (if any)
Return	✓	✓	✓	✓
Exchange	✓	✓	✓	
Repair	✓		✓	

* Including invoice, order number and etc.

Temtop warranty does NOT include:

- Malfunction or damages caused by artificial damage or modification.
- Other deliberate damages.
- Damage caused by natural events.

Elitech Technology, Inc

2528 Qume Dr, Ste 2

San Jose, CA 95131 USA

Tel: (+1) 408-898-2866

Facebook: www.facebook.com/temtopus

Instagram: www.instagram.com/temtopaqm/

youtube: www.youtube.com/@Temtopus

linkedin: www.linkedin.com/company/temtop-us/

X: x.com/temtopus48285

Sales: sales@temtopus.com

Website: www.temtopus.com

Elitech Brazil Ltda

R.Dona Rosalina,90-Lgara, Canoas-RS

92410-695,Brazil

Tel: (+55)51-3939-8634

Sales: brasil@e-elitech.com

Website: www.elitechbrasil.com.br

Elitech (UK) Limited

Unit 13 Greenwich Business Park,

53 Norman Road,London, SE10 9QF

Tel: (+44)208-858-1888

Youtube: [@elitech_uk](https://www.youtube.com/@elitech_uk)

Instagram: [@elitechuk_](https://www.instagram.com/@elitechuk_)

Facebook: [@hvaccontrol](https://www.facebook.com/@hvaccontrol)

Sales: sales@elitecheu.com

Website: www.temtop.co.uk

V1.0

Made In China