



**P100/M100
Air Station
User Manual**

Meet the Air Station

You are about to take the first step in controlling the air you breathe! Air Station is a comprehensive solution. By combining laser technology and electrochemical technology, Air Station can provide instant and accurate air quality level, see invisible threats in your air, and understand where they come from through the Air Station and its network with sub device.

Get the Temtop App

Please search **Temtop** in App Store or Google Play, Or simply scan the QR code below to download the App:



Air Quality Key Factors



PM2.5 (Particulate Matter 2.5) refers to fine particles with diameter of 2.5 micrometers or less. Due to its tiny size, PM2.5 can be absorbed into bloodstream and the lungs, which may cause eye and nose irritation, cough, asthma, emphysema, lung disease, heart attacks, cancer and etc.



PM10 (Particulate Matter 10) refers to particulates with a diameter of 10 micrometers or less. Due to the larger size, it's inhalable but penetrates no further than bronchi as larger particles can be filtered out by cilia and mucus of nose and throat. It usually considered as less harmful to health than PM2.5.



Carbon dioxide (CO₂) refers to a colorless and odorless gas that is usually derived from the breath of humans and animals. High CO₂ concentration means that fresh air or ventilation is required; otherwise, it may cause problems such as drowsiness, dizziness, loss of attention, and cognitive impairment.



Temperature & Humidity may often be ignored however they do have a significant impact on individual's well-being, comfort, health and safety as well as your property. High humidity may lead to an increase in household air pollutants especially the biological contaminants such as molds, bacteria, viruses and dust mites; cold, low humidity may cause nosebleeds, skin and respiratory irritations, dyspnea, static electricity and etc.



AQI (Air Quality Index) is a quick guide showing how clean or polluted the air is, using a range from 0 to 500, where higher index values indicate higher levels of air pollution and higher risks to health. There are six pollutants for AQI in US standard: PM_{2.5}/10, O₃, SO₂, NO₂, CO, where Temtop only focus on PM_{2.5}/10 and follows the US EPA Standards to compute AQI.

Overview

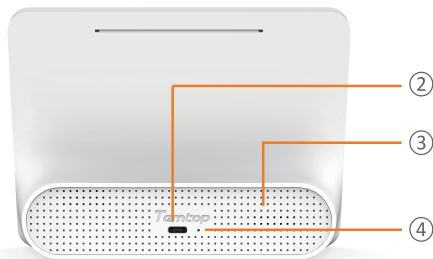


M100



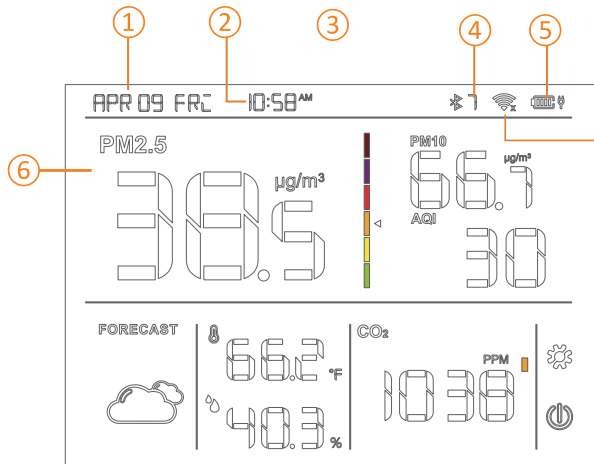
P100

**P100 and M100 are only different in display interface, the following operation instructions all take M100 as an example.*



Serial Number	Describe
①	7.8-inch screen
②	Type-C charging interface
③	PM2.5/CO ₂ inlet and outlet
④	Long press 5s to enter smartlink mode

Display



Status	Meaning
	Connected
	Not connected
	Smartlink mode

AQI	level
≥ 301	< Hazardous
201-300	< Very Unhealthy
151-200	< Unhealthy
101-150	< Unhealthy for Sensitive Groups
51-100	< Moderate
0-50	< Good

CO2(PPM)	level
2500-5000	< Poor
700-2500	< Fair
0-700	< Good



Sunny



Cloudy



Rainy



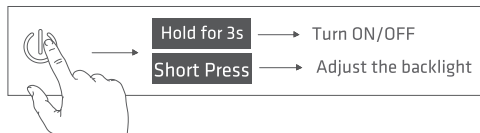
Snowy

Display

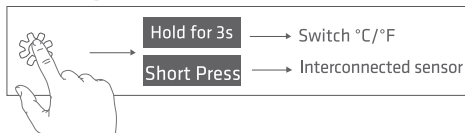
-
- | | | |
|---|--------------------------|--|
| ① | Date and day of the week | After setting the storage interval by phone, the set interval will be displayed to indicate that the setting is complete |
|---|--------------------------|--|
-
- | | | |
|---|------|---|
| ② | Time | The two-digit download progress will be displayed when upgrading the product firmware, and it will be automatically upgraded after 99 |
|---|------|---|
-
- | | | | | | |
|---|-----------|---|-----------------------|---|------------------------------|
| ③ | Bluebooth | ④ | Numbers of sub device | ⑤ | Battery & charging indicator |
|---|-----------|---|-----------------------|---|------------------------------|
-
- | | | |
|---|-------|--|
| ⑥ | PM2.5 | When the firmware is upgraded for the first time, the firmware version will be displayed when the firmware is restarted for the first time, and then it will work normally after restarting. |
|---|-------|--|
-

Operations

① Power key



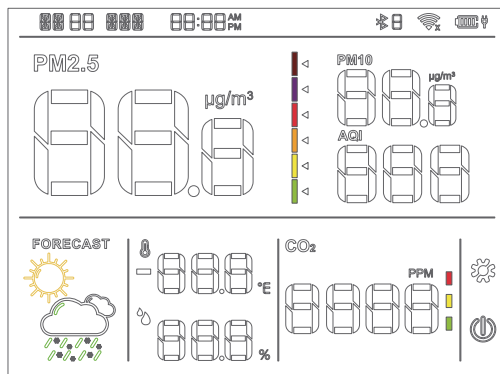
② Setting key



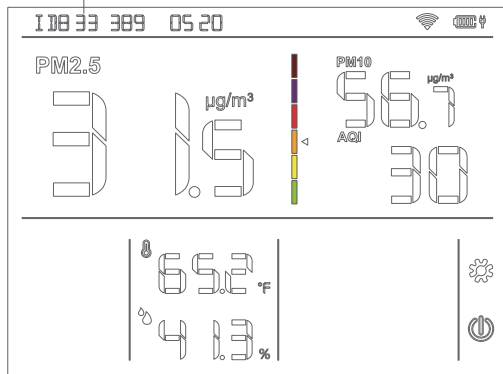
When in use, make sure that your fingers are in full contact with the button area to avoid too small contact area and the button will not respond.

Buzzer Indication: Two-beep occurs immediately when the device is on. A single beep occurs when entering the network configuration state/switching temperature unit / changing the backlight.

The last 10 digits of the sensor GUID code



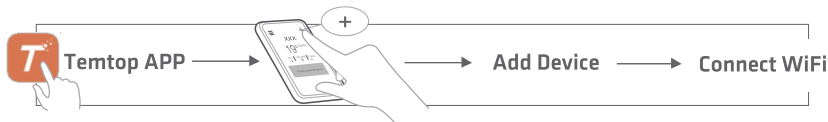
ON



Interconnected Sensor Take TP model as an example

WiFi Connection

Follow the instructions in the Temtop app to connect your Air Station. Here are the main steps of Connection.



Add Device

P100/M100 supports two ways: Bluetooth connection and manual connection.

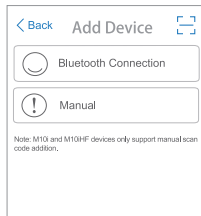
Bluetooth connection: The Bluetooth function of this device is turned on by default. Make sure you have enabled Bluetooth on your phone, select the device and add it. If the device is not connected to the network via Bluetooth within 30 minutes after turned on for the first time, please restart or press the reset button to re-enter the network configuration state.

Manual: Click '📶' to scan the QR code or enter the 20-digit GUID from the device, enter your preferred device name and click 'Next'. Then use a pin or stick to press and hold the reset button for 5s to enter smartlink mode.

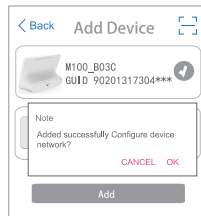
The SmartLink icon should be visible within 18 seconds after the device is on. The wireless icon on the screen will flash ascendingly like this: 📶 📶 📶 📶.

Connect WiFi

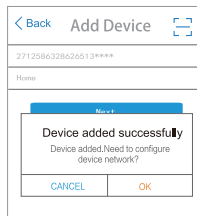
P100/M100 needs to be configured under the same WiFi as the mobile phone. Enter the password of the WiFi.



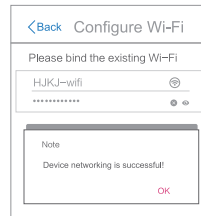
Add Device



Bluetooth connection



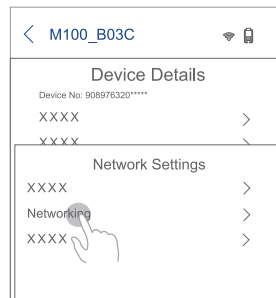
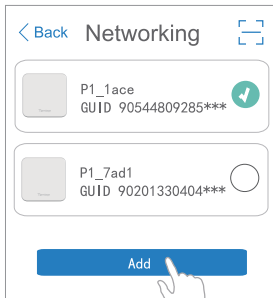
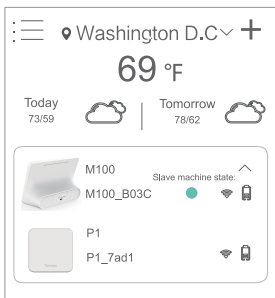
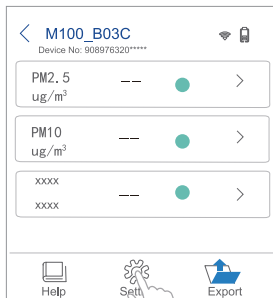
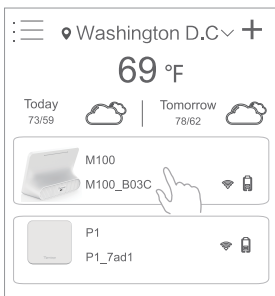
Manual



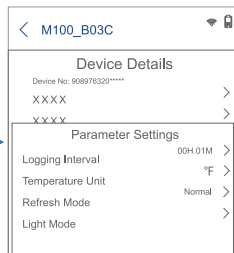
Connect WiFi

Networking

After referring to the master monitor adding method and adding sensors, the homepage displays all the added devices. Then click the 'setting' interface of the master to be networking to add, as shown in the flow chart below:



Settings & Calibration

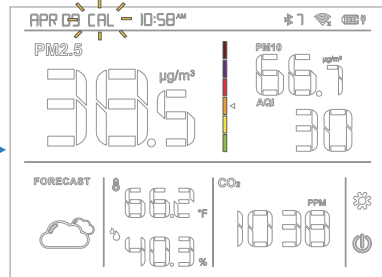
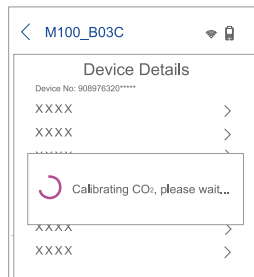


Logging Interval: Click to adjust the Interval among 1-60min.
 Temperature Unit: Click to switch °C/°F
 Refresh Mode: Click to switch with 3-levels of the data upload time interval.

- ☒ Normal: 30s
- ☐ Sensitive: 15s
- ☐ Power saving: 60s

Light Mode: Click to switch with 3-levels of different Brightness.

The Temtop APP supports setting CO₂ calibration. Place the machine in the outdoor air circulation, click CO₂ calibration in the APP, and the 'CAL' value flashes for 3 minute until the calibration is completed.



Note: During the manual calibration process, the device must be exposed to fresh outdoor air (about 400 ppm of CO₂), Maintain a distance of at least 1 meter from the device.

Specifications

Basic Specifications

Dimensions: 165*120*70mm
6.5*4.8*2.8in.

Display: 7.0" LCD screen

Battery Capacity: 4000mAh

Input: DC5V;2A

WiFi: 2.4GHz/5GHz

Temperature

Measuring range: -9.9-50°C (14.18-122°F)

Resolution: 0.1°C Accuracy: ±1°C

Humidity

Measuring range: 0-99.9 % RH

Resolution: 0.1% RH Accuracy: ±5% RH

PM Sensor

PM2.5

Measuring range: 0-999µg/m³

Resolution: 0.1µg/m³

Accuracy: ±10µg/m³ (0~100µg/m³)

±10% (100~500µg/m³)

PM10

Measuring range: 0-999µg/m³

Resolution: 0.1µg/m³

Accuracy: ±15µg/m³ (0~100µg/m³)

±15% (100~500µg/m³)

Gas sensor

CO₂

Measuring range: 0-5000PPM

Resolution: 1PPM

Accuracy: ±40PPM ± 3% reading

NOTE:

For long hours of use, the device can be used while connected to the power. A full charge will last about 6 hours when it is not plugged in. When the power is less than 15%, the battery icon on the top right will flash. Please charge the device in time.

What's Included



Air Station x 1



User Manual x 1



Type-C Cable x 1

Note: P100/M100 master monitor can be used alone or in combination with the interconnected sensor (the interconnected sensor needs to be purchased separately).

Note: A sincere effort was made to ensure that all information in this manual was current at the time of publication. However, final products may vary from the manual, and the specifications, features, and displays are subject to change. Please check with your Temtop representative for the latest information.

Warranty

Temtop warrants the included detector for 1 year from the date of original purchase. The item can be exchanged or returned within 30 days if the defect is not caused by artificial damage.

Item	Warranty Period
Detector	1 year included
Accessories	N/A

Before return or delivery for repair, please check if the following items are ready:

	Detector & Accessories	Complete Package	Proof of Purchase*	Gift (if any)
Return	✓	✓	✓	✓
Exchange	✓	✓	✓	
Repair	✓		✓	

Temtop warranty does NOT include:

- Malfunction or damages caused by artificial damage or modification.
- Other deliberate damages.
- Damage caused by natural events.

Returns and Exchanges

Item	Model Number	Request	Reason
1		<input type="checkbox"/> Refund <input type="checkbox"/> Exchange	
2		<input type="checkbox"/> Refund <input type="checkbox"/> Exchange	

Your E-mail Address: _____

Your Contact Number: _____

Shipping Address: _____

Temtop

Elitech Technology, Inc.

2528 Qume Dr, Ste 2
San Jose, CA 95131 USA
Tel: (+1) 408-898-2866
Sales: sales@temtopus.com
Website: www.temtopus.com

Elitech (UK) Limited

Unit 13 Greenwich Business Park,
53 Norman Road, London, SE10 9QF
Tel: (+44)208-858-1888
Support: service@elitech.uk.com
Website: www.temtop.co.uk

Elitech Brazil Ltda

R.Dona Rosalina,90-Lgara, Canoas-RS
92410-695,Brazil
Tel: (+55)51-3939-8634
Sales: brasil@e-elitech.com
Website: www.elitechbrasil.com.br

Made in China



V1.2