

DR-230W

Product manual



Safety instructions and precautions

1. Safety instructions

To ensure that you install and use this product correctly, please read and strictly comply with the following terms:

Battery	<ul style="list-style-type: none">⚠ Please use original or technically compatible batteries. Do not use batteries that do not meet product specifications to prevent damage to equipment or other malfunctions.⚠ Do not disassemble, squeeze, hit, or heat batteries privately, and do not place batteries in fire, as this may cause battery explosions and fires
External power supply:	<ul style="list-style-type: none">⚠ When external power supply is required, please use the power adapter configured for this device.⚠ Do not use other power adapters that do not meet the external connection technical specifications, otherwise it may damage the instrument and equipment, and even cause a fire power supply
Equipment	<ul style="list-style-type: none">⚠ In flammable and explosive gas environments, please use this equipment in accordance with compliance requirements, otherwise it may cause explosions and fires⚠ During the use of the device, if the device emits a burnt or other odor, the power supply should be immediately cut off and the manufacturer or supplier should be contacted in a timely manner

2. Attention:

- If the equipment is not used for a long time, it should be removed and stored in the packaging box in a dry and cool environment
 - Users are not allowed to make any unauthorized changes to this device. Any unauthorized changes may affect the accuracy of the device and even damage it
 - Do not use the device in harsh environments to avoid instrument short circuits, burns, and other malfunctions caused by adverse weather conditions such as rain and lightning
 - When the recorder is offline (no data upload), please confirm the networking status of the device
 - Please use within the measurement range of the recorder
 - Please mistakenly place the external probe directly in a liquid environment to avoid equipment damage
 - Please do not forcefully impact this recorder
- The measured values of the recorder may be affected by the following factors

Temperature error:

- Placed in the measurement environment for too short a stable time
- Close to heat sources, cold sources, or directly in a water soaked state

Humidity error:

- Placed in the measurement environment for too short a stable time
- Long term exposure to steam, water mist, water curtains, or condensation environments

Pollution:

- Being in a dusty or other polluted environment

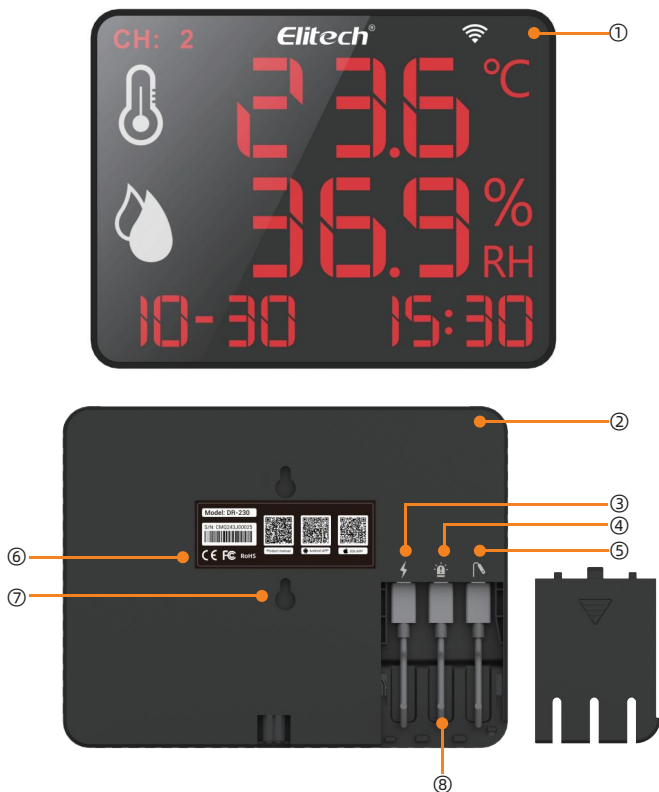
1.Product Overview

DR-230W real-time temperature and humidity recorder is a recorder product based on wireless communication technology, widely used in the industrial warehousing industry. Through WIFI data transmission, combined with the Elitech iCold, users can remotely view and manage real-time monitoring data online through a browser or smartphone terminal. This product also has remote platform alarm and local buzzer alarm prompt functions. DR-230W is a long-term power supply device that requires a 5V/2A power adapter for use. It supports both single channel and dual channel temperature and humidity probe types.

2.Model List and Specification

Specifications	
Measuring Range	Temperature: -40°C~+80°C Humidity: 0%RH~95%RH
Accuracy	Temperature: $\pm 0.5^{\circ}\text{C}$ (-20°C~40°C) ; $\pm 1^{\circ}\text{C}$ (Other) ; Humidity: $\pm 5\%\text{RH}$ (25°C)
Resolution	Temperature: 0.1°C Humidity: 0.1%RH
Sensor	Single channel digital temperature and humidity sensor/dual channel digital temperature and humidity sensor
Capacity	30000 data storage records, cyclic storage
Alarm	Local alarm (flashing screen display, sound and light alarm), cloud alarm (SMS, email, etc. alarm methods)
Data recording interval	Normal recording interval: 0~1440 minutes can be set, default is 5 minutes Alarm recording interval: 0~1440 minutes can be set, default is 2 minutes
Data upload interval	Normal upload interval: 0~1440 minutes can be set, default is 5 minutes Alarm upload interval: 0~1440 minutes can be set, default is 2 minutes
Power	5V2A dedicated power adapter
Dimensions	Device: 215x165x19mm (L * W * H)/470g
Protection grade	Prevent exposure to sunlight and rain
Ambient Temperature	-10°C ~ 45°C

3.Product Appearance



① Display	⑤ Sensor interfaces
② Hanging rope holes	⑥ Equipment labels
③ Power interfaces	⑦ Wall mounted holes/support holes
④ Alarm interfaces	⑧ Reset buttons

4.Display Description



① WIFI Status	⑤ Measurement Channel
② Temperature Data	⑥ Temperature Unit
③ Humidity Data	⑦ Humidity Unit
④ Device Time	

Tips:

Measurement Channel:

1. External first channel temperature and humidity sensor data;
2. External second channel temperature and humidity sensor data;

WIFI Status:

- light off----The device did not successfully connect to the network;
- light on----The device successfully connects to the network;
- Flicker----The device is waiting for WIFI distribution network;

5. How to use

Equipment operation

Insert the power supply, alarm (optional), and sensor in sequence according to the interface label on the back of the device (as shown in the figure below). After connecting the power supply, the device will automatically turn on.

Follow the instructions in the "APP Operation" to configure the device network and configuration;



APP operation

1. Download and install the APP

Please scan the QR code below to download the "ElitechiCold" APP (hereinafter referred to as the APP)



Android



IOS

2.Account registration and login

Open the APP, in the login interface (as shown in Figure 1), follow the prompts, enter the verification information, click "Login" to complete the account login. If you have not registered an account yet, please click on "New User Registration" in the login interface, complete the registration information in the pop-up interface (as shown in Figure 2), and follow the prompts to complete the registration.

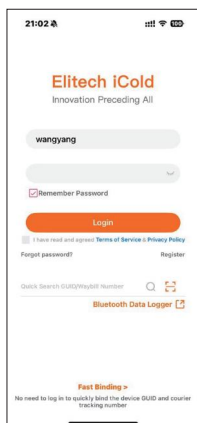


Figure 1

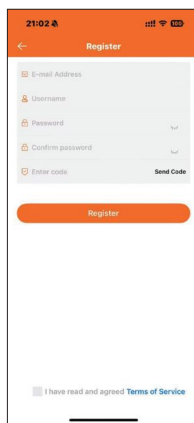
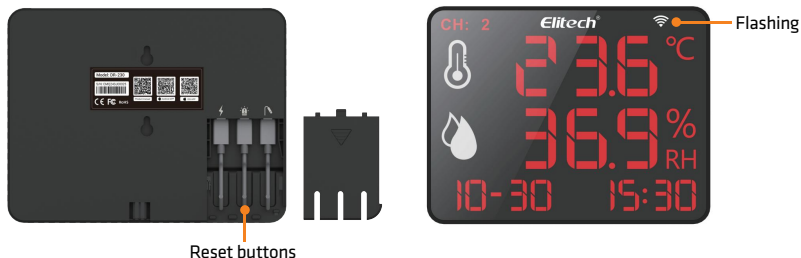


Figure 2

3. Equipment addition and distribution network

Connect the device power, open the interface compartment, press the embedded button to reset, and configure when the Wi Fi icon flashes.



After logging into the APP, click the plus sign "+" in the upper right corner of the main interface (as shown in Figure 3) to enter the device addition interface, and follow the prompts to scan the code to complete the device addition. When adding a device for the first time, the APP will prompt for WIFI configuration (as shown in Figure 4). Click "OK" to enter the WIFI configuration interface (as shown in Figure 5), enter the corresponding WIFI password, and after the device is powered on, click "OK" to configure the network; Alternatively, select "Cancel" on the WIFI configuration interface (as shown in Figure 4) and proceed with network configuration later;

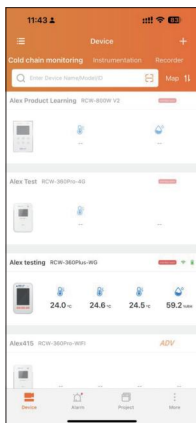


Figure 3

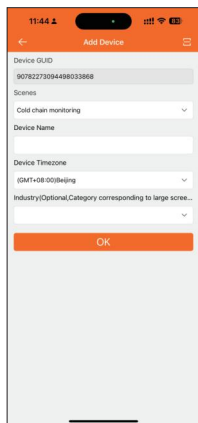


Figure 4

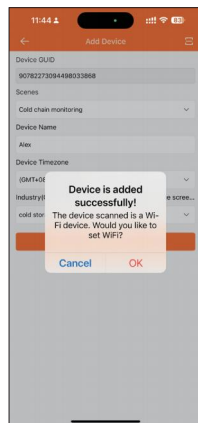


Figure 5

After completing the device addition, return to the main interface to view the added devices (as shown in Figure 6). Click on the corresponding device to enter the device details interface (as shown in Figure 7). Click on the WIFI icon on this interface to enter the WIFI configuration interface and configure the device's WIFI;

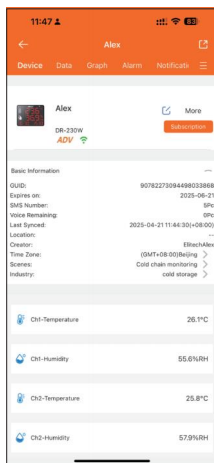


Figure 6

Tips:

- ① When the device is first used, it enters the distribution network mode as soon as it is powered on, waiting for the APP to perform the distribution network. After waiting for 5 minutes, if the distribution network fails or there is no distribution network operation, the distribution network mode will automatically exit. If you need to distribute the network again, please power on and off the equipment again;
- ② The device has already been configured with WIFI information. If you need to replace the WIFI network, please reconfigure it. When the device is powered on, click the reset button on the back of the device to restart and enter WIFI distribution mode. Follow the instructions in step 3 above to enter the WIFI configuration interface for configuration.

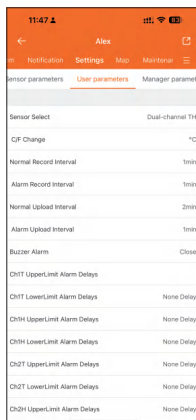


Figure 7

In the device details interface, you can click "More" and perform device deletion and other operations in the pop-up drop-down interface; After the device is deleted, its cloud based historical data will be deleted and cannot be recovered.



No	Material name	Quantity	Remarks
1	DR-230W	1 PCS	Including cover plate
2	Bracket	1 PCS	
3	Power adapter	1 PCS	
4	Power cable	1 PCS	
5	Sensor	1 PCS	Single or dual external temperature and humidity
6	Calibration Certificate	1 PCS	

5. Warranty and after-sales service

Product warranty: 1 year

This product can be returned, replaced or repaired within 7 days from the date of purchase due to performance failure. The warranty period is one year from the date of purchase (based on valid purchase receipts). During the warranty period, any malfunctions caused by quality problems of the product under normal use will be repaired free of charge. The shipping cost for repairing the product shall be borne unilaterally by the sender.

If any of the following situations are met, it is not within the scope of after-sales guarantee:

1. Damage caused by force majeure, such as earthquakes, fires, floods, typhoons, etc;
2. Damage caused by human factors such as improper use, maintenance, and storage by consumers;
3. Damage caused by maintenance, disassembly, etc. by non precision service personnel or authorized service providers;
4. Exceeding the warranty period and scope;
5. Natural wear and tear, consumption, and aging of products (such as shells, cables, etc.).